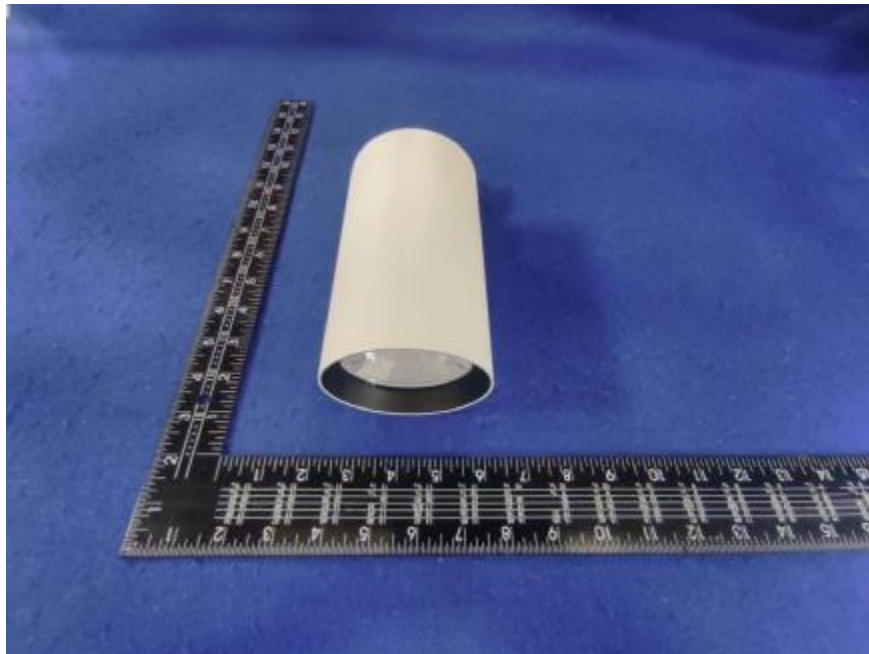


Luminaire Photograph



Light Output Ratio:	90.4%	
Luminaire Power:	36.49 W	
SHR Nominal:	0.00	Calculated using the TM5
SHR Maximum:	0.30	fine grid method.

C Range: 0 - 360DEG
C Interval: 30.0DEG
Test Speed: HIGH
Temperature: 25.3 °C
Operators: zoe
Test Date: 2024-3-28

γ Range: 0 - 180DEG
 γ Interval: 1.0DEG
Test System: EVERFINE GO-SPEX500_V1 SYSTEM V2.00.461
Humidity: 65.0%
Test Distance: 3.160m [K=1.0000]
Remarks: LAMP: BXRE-30G2000-C-83 Ra: 90
LENS: PM-0139 12R
DRIVER: TDI044NA0900EF 900mA
30minutes warm-up

LUMINOUS INTENSITY DISTRIBUTION DIAGRAM

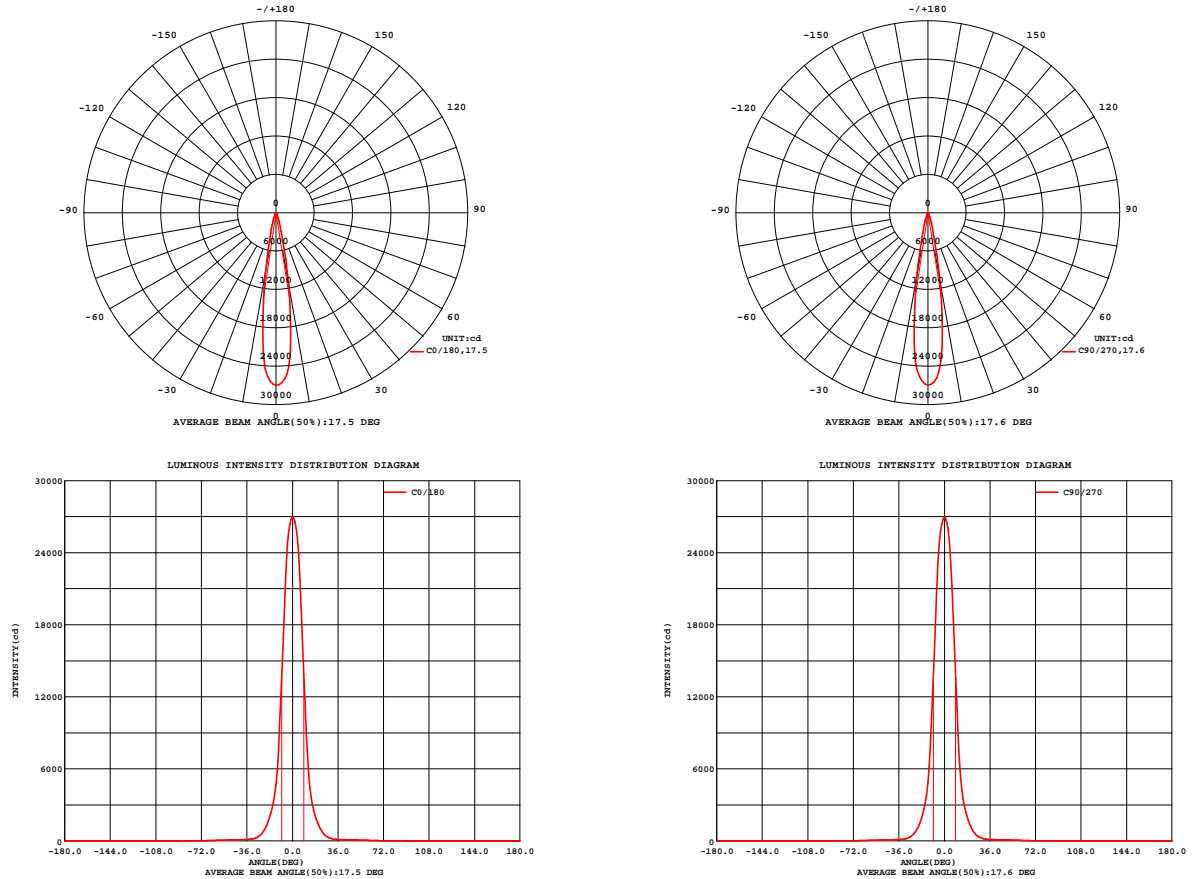


Fig. C0/C180

Fig. C90/C270

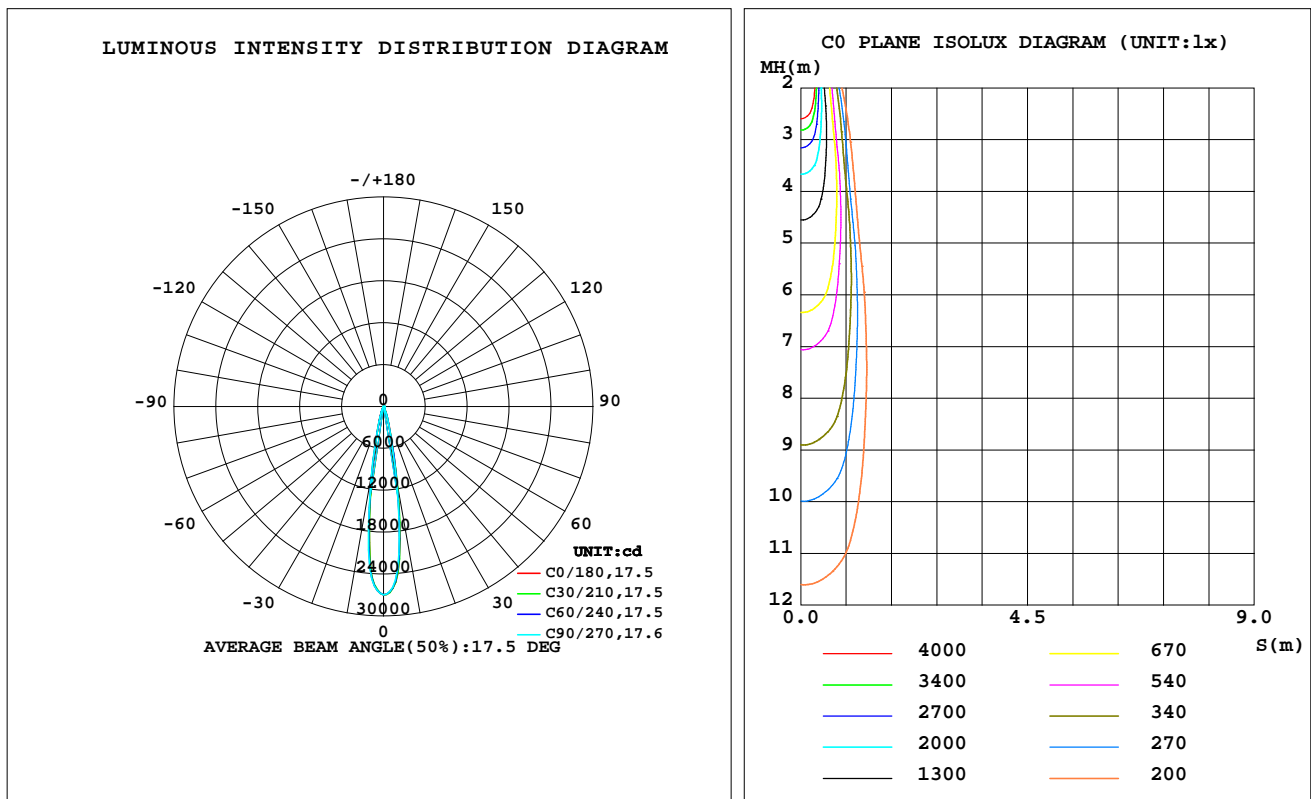
C Range: 0 - 360DEG
C Interval: 30.0DEG
Test Speed: HIGH
Temperature: 25.3 °C
Operators: zoe
Test Date: 2024-3-28

γ Range: 0 - 180DEG
 γ Interval: 1.0DEG
Test System: EVERFINE GO-SPEX500_V1 SYSTEM V2.00.461
Humidity: 65.0%
Test Distance: 3.160m [K=1.0000]
Remarks: LAMP: BXRE-30G2000-C-83 Ra: 90
LENS: PM-0139 12R
DRIVER: TDI044NA0900EF 900mA
30minutes warm-up

LUMINAIRE PHOTOMETRIC TEST REPORT

Test:U:120.21V I:0.3053A P:36.485W PF:0.9931 Freq:59.98Hz Lamp Flux:3734.05x1 lm		
NAME: 2319.221-H3AM	TYPE:	WEIGHT:
SPEC.: 3000K	DIM.:	SERIAL No.: 2403280235
MFR.: RISE	SUR.: 0.00580586m2	Shielding Angle:

DATA OF LAMP		PHOTOMETRIC DATA Eff: 92.49 lm/W			
MODEL	Brideglux	Imax(cd)	26937	S/MH(C0/180)	0.28
NOMINAL POWER(W)	36	LOR(%)	90.4	S/MH(C90/270)	0.29
RATED VOLTAGE(V)	120	TOTAL FLUX(lm)	3374.5	η UP,DN(C0-180)	0.0,46.4
NOMINAL FLUX(lm)	3734.05	CIE CLASS	DIRECT	η UP,DN(C180-360)	0.0,43.9
LAMPS INSIDE	1	η up(%)	0.0	CIBSE SHR NOM	0.00
TEST VOLTAGE(V)	120	η down(%)	90.4	CIBSE SHR MAX	0.30



C Range: 0 - 360DEG
C Interval: 30.0DEG
Test Speed: HIGH
Temperature:25.3℃
Operators:zoe
Test Date:2024-3-28

γ Range: 0 - 180DEG
 γ Interval: 1.0DEG
Test System:EVERFINE GO-SPEX500_V1 SYSTEM V2.00.461
Humidity:65.0%
Test Distance:3.160m [K=1.0000]
Remarks: LAMP:BXRE-30G2000-C-83 Ra:90
LENS:PM-0139 12R
DRIVER:TDI044NA0900EF 900mA
30minutes warm-up

ZONAL FLUX DIAGRAM

ZONAL FLUX DIAGRAM:

γ	C0	C45	C90	C135	C180	C225	C270	C315	γ	Φ zone	Φ total	%lum,lamp
10	1155	1153	1108	1021	956.3	958.0	1019	1084	0- 10	1757	1757	52.1,47.1
20	152.6	144.2	142.9	141.0	137.7	128.3	132.1	141.3	10- 20	1074	2831	83.9,75.8
30	22.32	21.39	21.74	21.96	21.16	18.97	20.08	21.90	20- 30	270.1	3102	91.9,83.1
40	11.06	11.11	11.08	11.04	10.85	10.82	10.71	10.93	30- 40	87.29	3189	94.5,85.4
50	8.589	8.664	8.727	8.610	8.453	8.380	8.367	8.517	40- 50	75.50	3264	96.7,87.4
60	5.534	5.652	5.575	5.576	5.437	5.372	5.395	5.515	50- 60	63.37	3328	98.6,89.1
70	2.027	2.158	2.112	2.000	1.818	1.794	1.824	1.983	60- 70	37.95	3366	99.7,90.1
80	0.0377	0.0340	0.0322	0.0285	0.0266	0.0221	0.0238	0.0230	70- 80	8.672	3374	100,90.4
90	0	0	0	0	0	0	0	0	80- 90	0.1967	3375	100,90.4
100	0	0	0	0	0	0	0	0	90-100	0	3375	100,90.4
110	0	0	0	0	0	0	0	0	100-110	0	3375	100,90.4
120	0	0	0	0	0	0	0	0	110-120	0	3375	100,90.4
130	0	0	0	0	0	0	0	0	120-130	0	3375	100,90.4
140	0	0	0	0	0	0	0	0	130-140	0	3375	100,90.4
150	0	0	0	0	0	0	0	0	140-150	0	3375	100,90.4
160	0	0	0	0	0	0	0	0	150-160	0	3375	100,90.4
170	0	0	0	0	0	0	0	0	160-170	0	3375	100,90.4
180	0	0	0	0	0	0	0	0	170-180	0	3375	100,90.4
DEG	LUMINOUS INTENSITY:X10cd									UNIT:lm		

C Range: 0 - 360DEG
C Interval: 30.0DEG
Test Speed: HIGH
Temperature:25.3℃
Operators:zoe
Test Date:2024-3-28

γ Range: 0 - 180DEG
 γ Interval: 1.0DEG
Test System:EVERFINE GO-SPEX500_V1 SYSTEM V2.00.461
Humidity:65.0%
Test Distance:3.160m [K=1.0000]
Remarks: LAMP:BXRE-30G2000-C-83 Ra:90
LENS:PM-0139 12R
DRIVER:TDI044NA0900EF 900mA
30minutes warm-up

LUMINANCE LIMITATION CURVES

Test:U:120.21V I:0.3053A P:36.485W PF:0.9931 Freq:59.98Hz
Lamp Flux:3734.05x1 lm

NAME: 2319.221-H3AM

TYPE:

WEIGHT:

SPEC.: 3000K

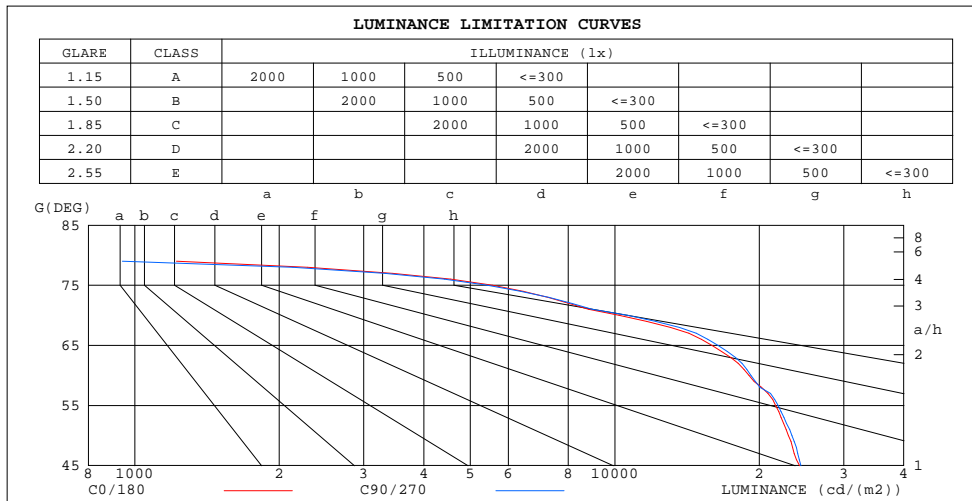
DIM.:

SERIAL No.: 2403280235

MFR.: RISE

SUR.: 0.00580586m2

Shielding Angle:



LUMINANCE cd/(m2)		
G(180)	C0/180	C90/270
85	473	423
80	374	319
75	5556	5424
70	10204	10636
65	15932	16413
60	19055	19207
55	21630	21910
50	23005	23388
45	24267	24420

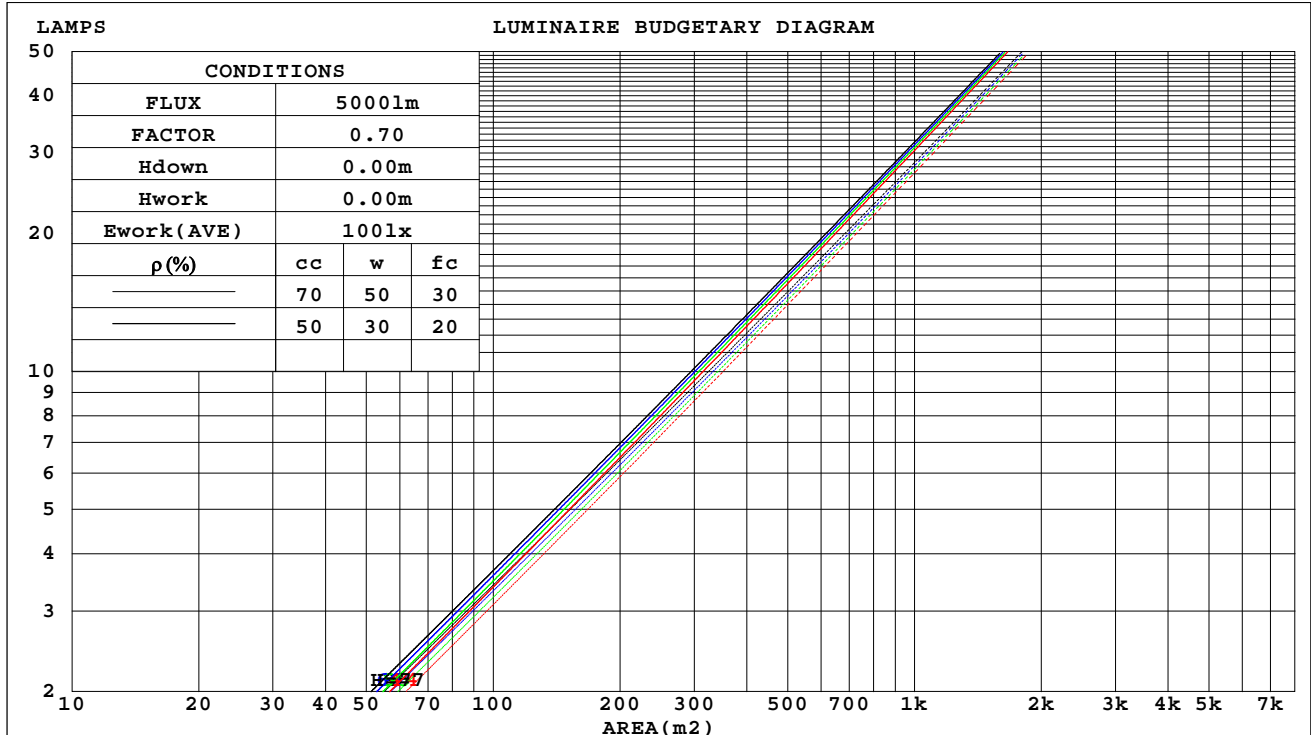
C Range: 0 - 360DEG
C Interval: 30.0DEG
Test Speed: HIGH
Temperature:25.3℃
Operators:zoe
Test Date:2024-3-28

γ Range: 0 - 180DEG
γ Interval: 1.0DEG
Test System:EVERFINE GO-SPEX500_V1 SYSTEM V2.00.461
Humidity:65.0%
Test Distance:3.160m [K=1.0000]
Remarks: LAMP:BXRE-30G2000-C-83 Ra:90
LENS:PM-0139 12R
DRIVER:TDI044NA0900EF 900mA
30minutes warm-up

CU AND LUMINAIRE BUDGETARY ESTIMATE DIAGRAM

Test:U:120.21V I:0.3053A P:36.485W PF:0.9931 Freq:59.98Hz Lamp Flux:3734.05x1 lm		
NAME: 2319.221-H3AM	TYPE:	WEIGHT:
SPEC.: 3000K	DIM.:	SERIAL No.: 2403280235
MFR.: RISE	SUR.: 0.00580586m2	Shielding Angle:

ρ_{cc}	80%			70%			50%			30%			10%			0
ρ_w	50%	30%	10%	50%	30%	10%	50%	30%	10%	50%	30%	10%	50%	30%	10%	0
ρ_{fc}	20%			20%			20%			20%			20%			0
RCR	RCR:Room Cavity Ratio															



C Range: 0 - 360DEG
C Interval: 30.0DEG
Test Speed: HIGH
Temperature:25.3℃
Operators:zoe
Test Date:2024-3-28

γ Range: 0 - 180DEG
 γ Interval: 1.0DEG
Test System:EVERFINE GO-SPEX500_V1 SYSTEM V2.00.461
Humidity:65.0%
Test Distance:3.160m [K=1.0000]
Remarks: LAMP:BXRE-30G2000-C-83 Ra:90
LENS:PM-0139 12R
DRIVER:TDI044NA0900EF 900mA
30minutes warm-up



WEC AND CCEC

Test:U:120.21V I:0.3053A P:36.485W PF:0.9931 Freq:59.98Hz Lamp Flux:3734.05x1 lm		
NAME: 2319.221-H3AM	TYPE:	WEIGHT:
SPEC.: 3000K	DIM.:	SERIAL No.: 2403280235
MFR.: RISE	SUR.: 0.00580586m2	Shielding Angle:

ρ_{cc}	80%			70%			50%			30%			10%			0
ρ_w	50%	30%	10%	50%	30%	10%	50%	30%	10%	50%	30%	10%	50%	30%	10%	0
ρ_{fc}	20%			20%			20%			20%			20%			0
RCR	RCR:Room Cavity Ratio						Wall Exitance Coefficients(WEC)									
0.0																
1.0	.120	.068	.022	.114	.065	.021	.103	.059	.019	.093	.054	.017	.083	.048	.016	
2.0	.111	.061	.019	.106	.059	.018	.097	.054	.017	.089	.050	.016	.081	.046	.014	
3.0	.103	.055	.016	.099	.053	.016	.091	.049	.015	.084	.046	.014	.078	.043	.013	
4.0	.096	.050	.015	.092	.048	.014	.086	.045	.014	.080	.043	.013	.074	.040	.012	
5.0	.089	.045	.013	.086	.044	.013	.081	.042	.012	.076	.040	.012	.071	.038	.011	
6.0	.083	.042	.012	.081	.041	.012	.076	.039	.011	.072	.037	.011	.068	.036	.011	
7.0	.078	.039	.011	.076	.038	.011	.072	.037	.011	.069	.035	.010	.065	.034	.010	
8.0	.074	.036	.010	.072	.036	.010	.069	.034	.010	.065	.033	.010	.062	.032	.009	
9.0	.070	.034	.009	.069	.033	.009	.066	.032	.009	.063	.031	.009	.060	.030	.009	
10.0	.067	.032	.009	.065	.032	.009	.063	.031	.009	.060	.030	.008	.058	.029	.008	

ρ_{cc}	80%			70%			50%			30%			10%			0
ρ_w	50%	30%	10%	50%	30%	10%	50%	30%	10%	50%	30%	10%	50%	30%	10%	0
ρ_{fc}	20%			20%			20%			20%			20%			0
RCR	RCR:Room Cavity Ratio			Ceiling Cavity Exitance Coefficients(CCEC)												
0.0	.172	.172	.172	.147	.147	.147	.100	.100	.100	.058	.058	.058	.018	.018	.018	
1.0	.152	.143	.134	.130	.122	.115	.089	.084	.080	.051	.049	.046	.016	.016	.015	
2.0	.135	.120	.107	.116	.103	.093	.079	.071	.065	.046	.042	.038	.015	.013	.012	
3.0	.121	.102	.087	.104	.088	.076	.071	.061	.053	.041	.036	.031	.013	.012	.010	
4.0	.110	.088	.072	.094	.076	.063	.065	.053	.044	.037	.031	.026	.012	.010	.009	
5.0	.100	.077	.060	.086	.067	.052	.059	.047	.037	.034	.027	.022	.011	.009	.007	
6.0	.091	.068	.051	.079	.059	.045	.054	.041	.032	.031	.024	.019	.010	.008	.006	
7.0	.084	.060	.044	.072	.052	.038	.050	.037	.027	.029	.022	.016	.009	.007	.005	
8.0	.078	.054	.038	.067	.047	.033	.046	.033	.023	.027	.019	.014	.009	.006	.005	
9.0	.072	.049	.033	.062	.042	.029	.043	.030	.020	.025	.018	.012	.008	.006	.004	
10.0	.068	.044	.029	.058	.039	.025	.040	.027	.018	.024	.016	.011	.008	.005	.004	

C Range: 0 - 360DEG
C Interval: 30.0DEG
Test Speed: HIGH
Temperature:25.3℃
Operators:zoe
Test Date:2024-3-28

γ Range: 0 - 180DEG
 γ Interval: 1.0DEG
Test System:EVERFINE GO-SPEX500_V1 SYSTEM V2.00.461
Humidity:65.0%
Test Distance:3.160m [K=1.0000]
Remarks: LAMP:BXRE-30G2000-C-83 Ra:90
LENS:PM-0139 12R
DRIVER:TDI044NA0900EF 900mA
30minutes warm-up

UGR(Unified Glare Rating) Table

Test:U:120.21V I:0.3053A P:36.485W PF:0.9931 Freq:59.98Hz Lamp Flux:3734.05x1 lm										
NAME: 2319.221-H3AM					TYPE:			WEIGHT:		
SPEC.: 3000K					DIM.:			SERIAL No.: 2403280235		
MFR.: RISE					SUR.: 0.00580586m2			Shielding Angle:		
ceiling/cavity	0.7	0.7	0.5	0.5	0.3	0.7	0.7	0.5	0.5	0.3
walls	0.5	0.3	0.5	0.3	0.3	0.5	0.3	0.5	0.3	0.3
working plane	0.2	0.2	0.2	0.2	0.2	0.2	0.2	0.2	0.2	0.2
Room dimensions	Viewed crosswise					Viewed endwise				
x = 2H y = 2H	11.6	12.2	11.8	12.4	12.5	11.6	12.3	11.8	12.4	12.5
3H	12.4	12.9	12.6	13.1	13.3	12.4	13.0	12.6	13.2	13.4
4H	12.4	13.0	12.7	13.2	13.4	12.5	13.0	12.7	13.2	13.4
6H	12.3	12.9	12.6	13.1	13.3	12.4	12.9	12.7	13.1	13.4
8H	12.3	12.8	12.6	13.0	13.3	12.4	12.9	12.6	13.1	13.3
12H	12.3	12.7	12.6	13.0	13.3	12.3	12.8	12.6	13.1	13.3
4H 2H	12.1	12.7	12.4	12.9	13.1	12.1	12.7	12.4	12.9	13.1
3H	12.9	13.4	13.2	13.6	13.9	12.9	13.4	13.2	13.7	13.9
4H	13.0	13.4	13.3	13.7	14.0	13.0	13.4	13.3	13.7	14.0
6H	12.9	13.3	13.2	13.6	13.9	12.9	13.3	13.3	13.6	14.0
8H	12.8	13.2	13.2	13.5	13.9	12.9	13.2	13.2	13.6	13.9
12H	12.8	13.1	13.2	13.5	13.9	12.8	13.1	13.2	13.5	13.9
8H 4H	12.9	13.3	13.3	13.6	14.0	12.9	13.3	13.3	13.6	14.0
6H	12.8	13.1	13.2	13.5	13.9	12.8	13.1	13.3	13.5	13.9
8H	12.7	13.0	13.2	13.4	13.9	12.8	13.0	13.2	13.5	13.9
12H	12.7	12.9	13.1	13.4	13.8	12.7	12.9	13.2	13.4	13.9
12H 4H	12.8	13.2	13.2	13.5	13.9	12.9	13.2	13.3	13.6	14.0
6H	12.7	13.0	13.2	13.4	13.9	12.8	13.0	13.2	13.5	13.9
8H	12.7	12.9	13.1	13.4	13.8	12.7	12.9	13.2	13.4	13.9
Variations with the observer position at spacings(CIE Pub.117):										
S = 1.0H	+ 0.4 / - 0.5					+ 0.3 / - 0.4				
1.5H	+ 0.3 / - 0.4					+ 0.2 / - 0.4				
2.0H	+ 0.6 / - 0.7					+ 0.7 / - 0.7				

CIE Pub.117, 3734 lm Total Lamp Luminous Flux Correct (8log(F/F0) = 4.6)
Area: 0.00580586 m2

C Range: 0 - 360DEG
C Interval: 30.0DEG
Test Speed: HIGH
Temperature:25.3℃
Operators:zoe
Test Date:2024-3-28

γ Range: 0 - 180DEG
γ Interval: 1.0DEG
Test System:EVERFINE GO-SPEX500_V1 SYSTEM V2.00.461
Humidity:65.0%
Test Distance:3.160m [K=1.0000]
Remarks: LAMP:BXRE-30G2000-C-83 Ra:90
LENS:PM-0139 12R
DRIVER:TDI044NA0900EF 900mA
30minutes warm-up

UTILIZATION FACTORS TABLE

Test:U:120.21V I:0.3053A P:36.485W PF:0.9931 Freq:59.98Hz Lamp Flux:3734.05x1 lm		
NAME: 2319.221-H3AM	TYPE:	WEIGHT:
SPEC.: 3000K	DIM.:	SERIAL No.: 2403280235
MFR.: RISE	SUR.: 0.00580586m2	Shielding Angle:

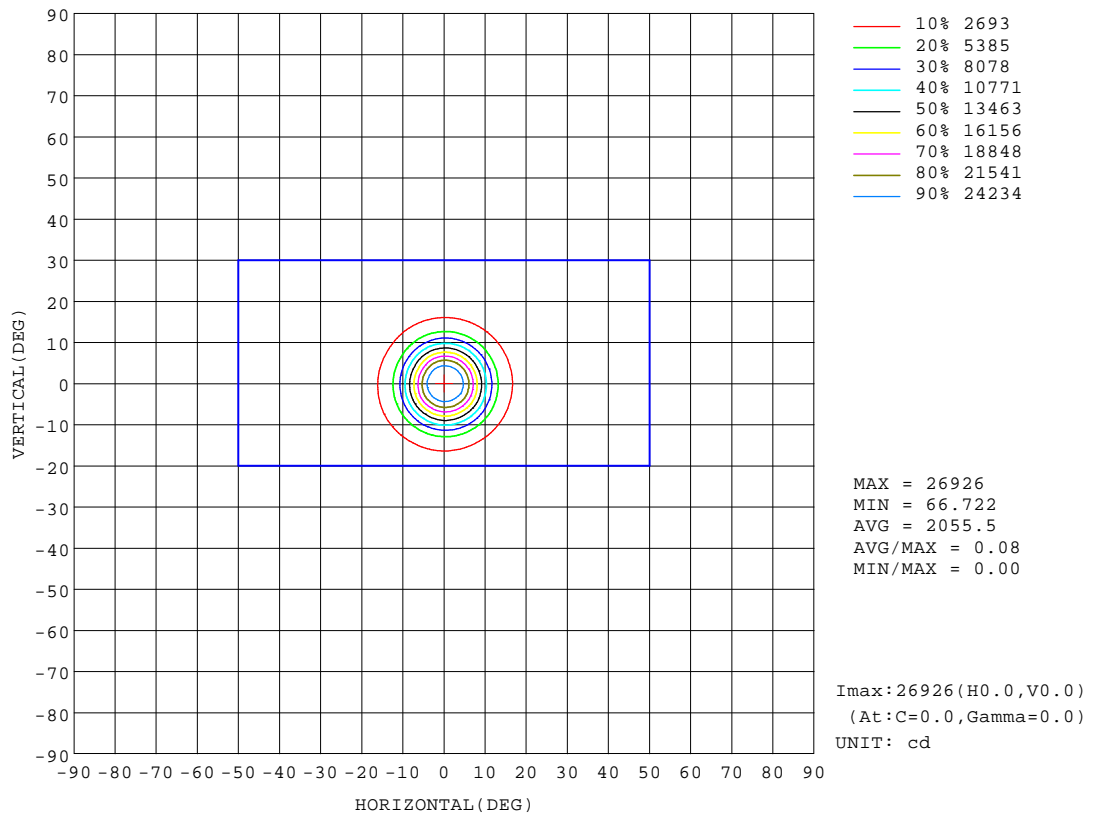
REFLECTANCE										
Ceiling	0.8	0.8	0.8	0.7	0.7	0.7	0.5	0.5	0.5	0
Walls	0.7	0.5	0.3	0.7	0.5	0.3	0.7	0.5	0.3	0
Working plane	0.2	0.2	0.2	0.2	0.2	0.2	0.2	0.2	0.2	0
ROOM INDEX	UTILIZATION FACTORS(PERCENT) $k(RI) \times RCR = 5$									
k = 0.60	80	74	71	79	74	71	78	74	70	67
0.80	86	81	78	86	81	78	85	80	77	74
1.00	90	85	82	89	85	82	88	84	81	78
1.25	94	89	86	93	88	85	91	87	85	81
1.50	96	92	89	95	91	88	93	90	87	83
2.00	98	95	92	97	94	91	95	92	90	85
2.50	100	96	94	98	95	93	96	93	91	86
3.00	101	98	96	100	97	95	96	94	93	87
4.00	103	101	99	101	99	97	98	96	95	89
5.00	104	102	101	102	100	99	99	97	96	89
ROOM INDEX	UF(total)									Direct
According to DIN EN 13032-2 2004			Suspended					SHRNOM = 1.25		

C Range: 0 - 360DEG
C Interval: 30.0DEG
Test Speed: HIGH
Temperature:25.3℃
Operators:zoe
Test Date:2024-3-28

γ Range: 0 - 180DEG
γ Interval: 1.0DEG
Test System:EVERFINE GO-SPEX500_V1 SYSTEM V2.00.461
Humidity:65.0%
Test Distance:3.160m [K=1.0000]
Remarks: LAMP:BXRE-30G2000-C-83 Ra:90
LENS:PM-0139 12R
DRIVER:TDI044NA0900EF 900mA
30minutes warm-up

ISOCANDELA DIAGRAM

Test:U:120.21V I:0.3053A P:36.485W PF:0.9931 Freq:59.98Hz Lamp Flux:3734.05x1 lm		
NAME: 2319.221-H3AM	TYPE:	WEIGHT:
SPEC.: 3000K	DIM.:	SERIAL No.: 2403280235
MFR.: RISE	SUR.: 0.00580586m2	Shielding Angle:

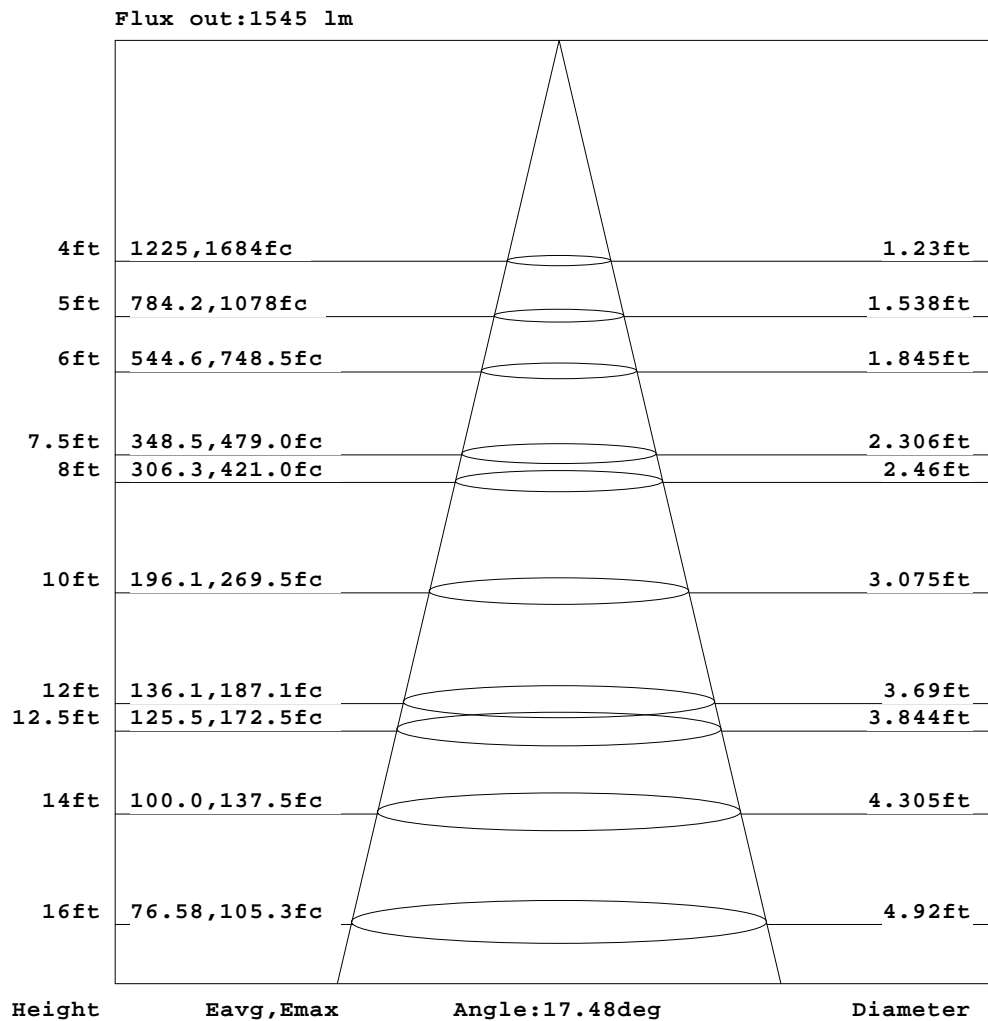


C Range: 0 - 360DEG
C Interval: 30.0DEG
Test Speed: HIGH
Temperature: 25.3 °C
Operators: zoe
Test Date: 2024-3-28

γ Range: 0 - 180DEG
γ Interval: 1.0DEG
Test System: EVERFINE GO-SPEX500_V1 SYSTEM V2.00.461
Humidity: 65.0%
Test Distance: 3.160m [K=1.0000]
Remarks: LAMP: BXRE-30G2000-C-83 Ra: 90
LENS: PM-0139 12R
DRIVER: TDI044NA0900EF 900mA
30minutes warm-up

AAI Figure

Test:U:120.21V I:0.3053A P:36.485W PF:0.9931 Freq:59.98Hz Lamp Flux:3734.05x1 lm		
NAME: 2319.221-H3AM	TYPE:	WEIGHT:
SPEC.: 3000K	DIM.:	SERIAL No.: 2403280235
MFR.: RISE	SUR.: 0.00580586m2	Shielding Angle:



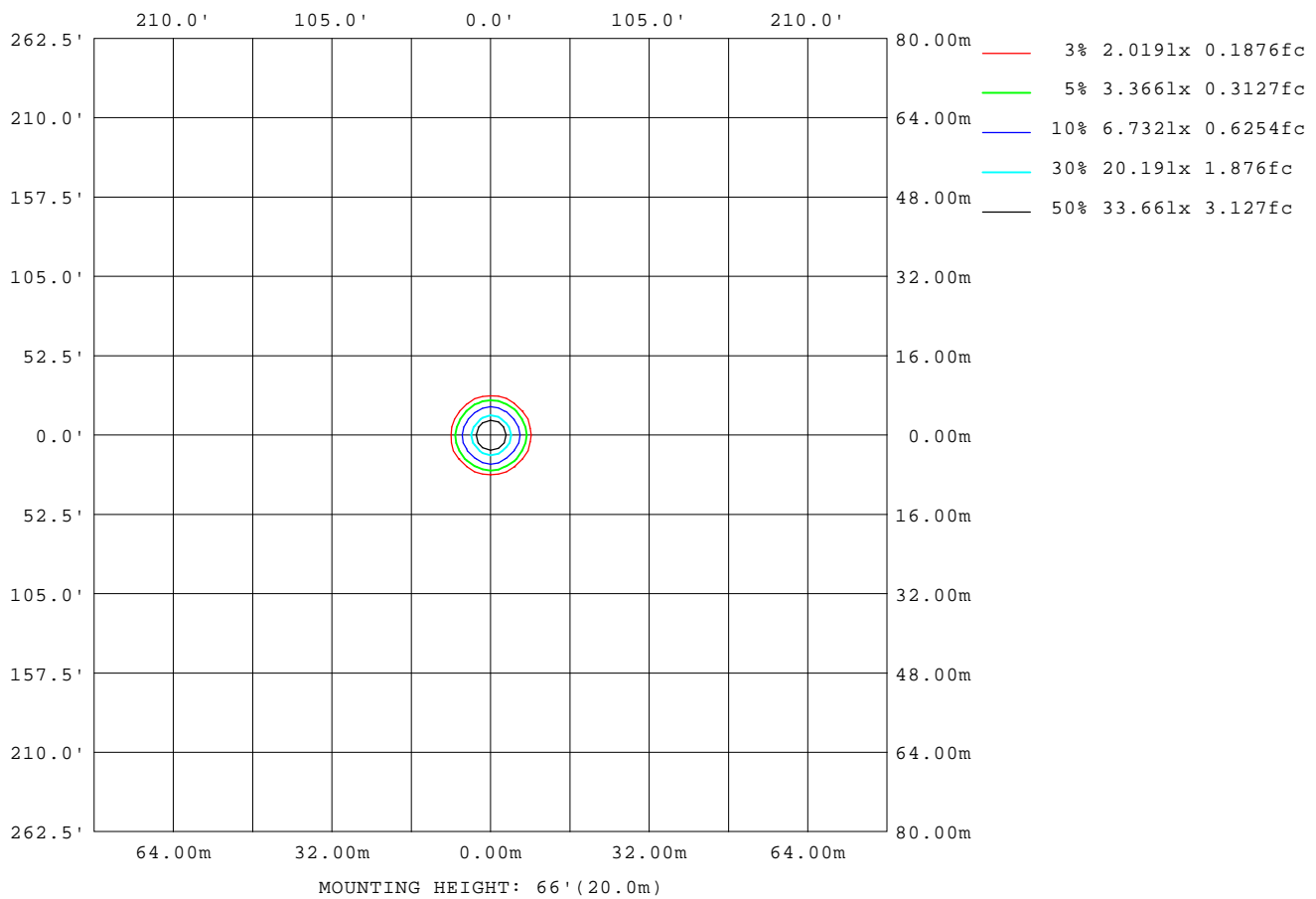
Note:The Curves indicate the illuminated area and the average illumination when the luminaire is at different distance.

C Range: 0 - 360DEG
C Interval: 30.0DEG
Test Speed: HIGH
Temperature:25.3℃
Operators:zoe
Test Date:2024-3-28

γ Range: 0 - 180DEG
γ Interval: 1.0DEG
Test System:EVERFINE GO-SPEX500_V1 SYSTEM V2.00.461
Humidity:65.0%
Test Distance:3.160m [K=1.0000]
Remarks: LAMP:BXRE-30G2000-C-83 Ra:90
LENS:PM-0139 12R
DRIVER:TDI044NA0900EF 900mA
30minutes warm-up

ISOLUX DIAGRAM

Test:U:120.21V I:0.3053A P:36.485W PF:0.9931 Freq:59.98Hz Lamp Flux:3734.05x1 lm		
NAME: 2319.221-H3AM	TYPE:	WEIGHT:
SPEC.: 3000K	DIM.:	SERIAL No.: 2403280235
MFR.: RISE	SUR.: 0.00580586m2	Shielding Angle:



C Range: 0 - 360DEG
C Interval: 30.0DEG
Test Speed: HIGH
Temperature:25.3℃
Operators:zoe
Test Date:2024-3-28

γ Range: 0 - 180DEG
γ Interval: 1.0DEG
Test System:EVERFINE GO-SPEX500_V1 SYSTEM V2.00.461
Humidity:65.0%
Test Distance:3.160m [K=1.0000]
Remarks: LAMP:BXRE-30G2000-C-83 Ra:90
LENS:PM-0139 12R
DRIVER:TDI044NA0900EF 900mA
30minutes warm-up

LED Avg.L Report

Test:U:120.21V I:0.3053A P:36.485W PF:0.9931 Freq:59.98Hz Lamp Flux:3734.05x1 lm		
NAME: 2319.221-H3AM	TYPE:	WEIGHT:
SPEC.: 3000K	DIM.:	SERIAL No.: 2403280235
MFR.: RISE	SUR.: 0.00580586m2	Shielding Angle:

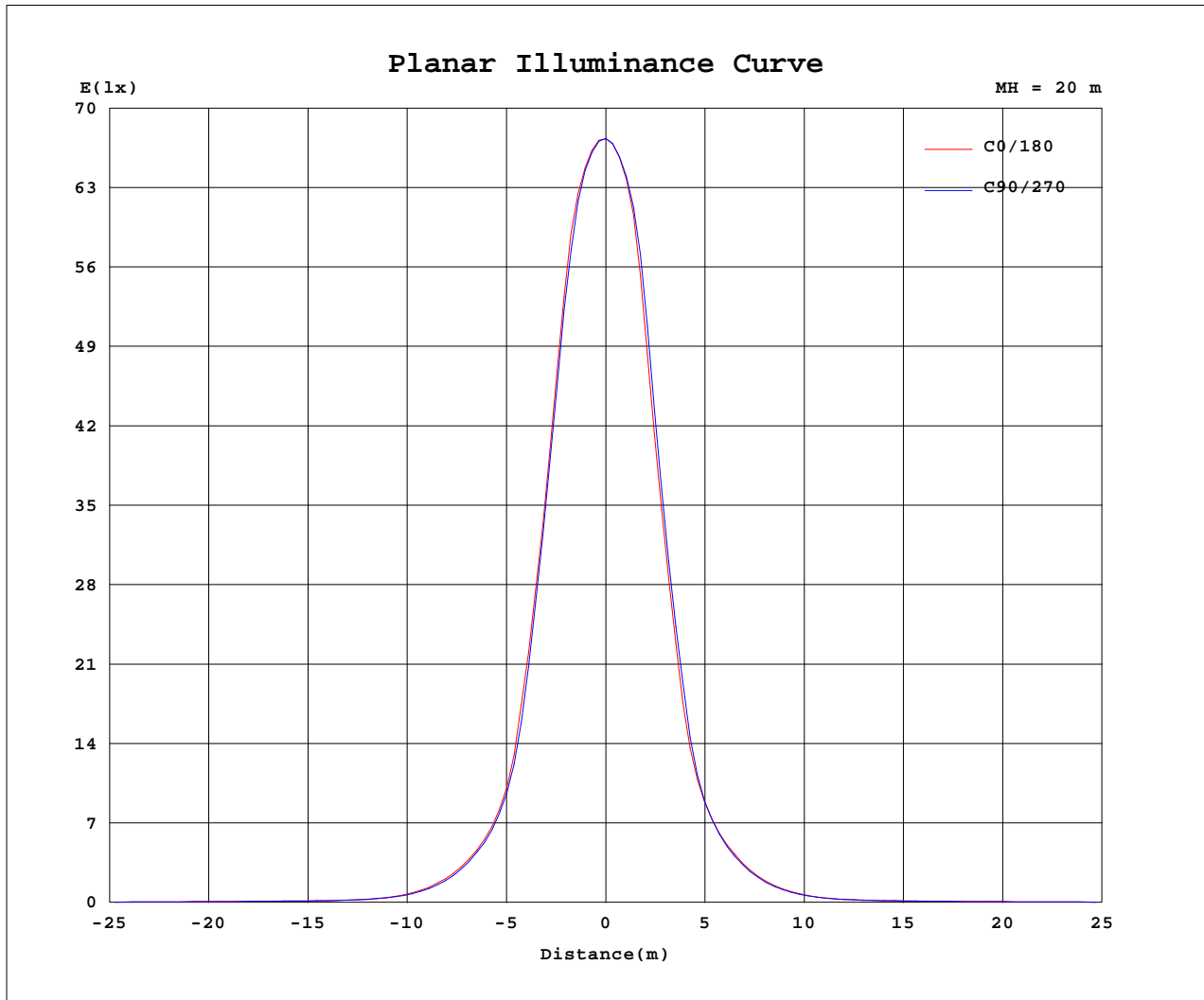
AvgL	cd/m2
L_0~180(65)av	15571
L_0~180(75)av	5055
L_0~180(85)av	441
L_90~270(65)av	15849
L_90~270(75)av	5129
L_90~270(85)av	398
L_45(65)av	15944
L_45(75)av	5207
L_45(85)av	313

Standard: GB/T 29293-2012

C Range: 0 - 360DEG
C Interval: 30.0DEG
Test Speed: HIGH
Temperature:25.3℃
Operators:zoe
Test Date:2024-3-28

γ Range: 0 - 180DEG
γ Interval: 1.0DEG
Test System:EVERFINE GO-SPEX500_V1 SYSTEM V2.00.461
Humidity:65.0%
Test Distance:3.160m [K=1.0000]
Remarks: LAMP:BXRE-30G2000-C-83 Ra:90
LENS:PM-0139 12R
DRIVER:TDI044NA0900EF 900mA
30minutes warm-up

Planar Illuminance Curve



C Range: 0 - 360DEG
 C Interval: 30.0DEG
 Test Speed: HIGH
 Temperature: 25.3 °C
 Operators: zoe
 Test Date: 2024-3-28

γ Range: 0 - 180DEG
 γ Interval: 1.0DEG
 Test System: EVERFINE GO-SPEX500_V1 SYSTEM V2.00.461
 Humidity: 65.0%
 Test Distance: 3.160m [K=1.0000]
 Remarks: LAMP: BXRE-30G2000-C-83 Ra: 90
 LENS: PM-0139 12R
 DRIVER: TDI044NA0900EF 900mA
 30minutes warm-up



LUMINOUS DISTRIBUTION INTENSITY DATA

Test:U:120.21V I:0.3053A P:36.485W PF:0.9931 Freq:59.98Hz Lamp Flux:3734.05x1 lm		
NAME: 2319.221-H3AM	TYPE:	WEIGHT:
SPEC.: 3000K	DIM.:	SERIAL No.: 2403280235
MFR.: RISE	SUR.: 0.00580586m2	Shielding Angle:

Table--1

UNIT: X10cd

C(DEG) γ (DEG)	0	30	60	90	120	150	180	210	240	270	300	330						
0	2694	2694	2694	2694	2694	2694	2694	2694	2694	2694	2694	2694						
5	2388	2387	2348	2324	2294	2270	2238	2227	2280	2311	2336	2364						
10	1155	1172	1134	1108	1044	997	956	932	984	1019	1065	1104						
15	363	358	348	347	336	335	324	307	315	323	331	346						
20	153	148	141	143	139	143	138	127	130	132	138	144						
25	58.5	54.9	52.1	53.2	52.7	55.0	52.0	45.9	47.8	49.5	52.3	55.2						
30	22.3	22.2	20.5	21.7	21.5	22.4	21.2	18.6	19.3	20.1	21.4	22.4						
35	13.6	13.5	13.4	13.2	13.3	13.4	13.0	12.7	12.9	12.7	13.0	13.4						
40	11.1	11.1	11.1	11.1	11.0	11.1	10.8	10.7	10.9	10.7	10.8	11.1						
45	9.97	9.90	9.99	10.0	9.82	9.95	9.74	9.56	9.73	9.60	9.66	9.88						
50	8.59	8.58	8.74	8.73	8.58	8.64	8.45	8.33	8.43	8.37	8.44	8.60						
55	7.21	7.29	7.29	7.30	7.25	7.17	7.05	7.00	7.00	7.00	7.13	7.15						
60	5.53	5.68	5.63	5.57	5.63	5.52	5.44	5.37	5.38	5.40	5.54	5.49						
65	3.91	4.06	4.07	4.03	4.01	3.91	3.73	3.67	3.74	3.75	3.87	3.91						
70	2.03	2.16	2.15	2.11	2.04	1.96	1.82	1.71	1.88	1.82	1.99	1.97						
75	0.84	0.88	0.86	0.81	0.80	0.75	0.68	0.67	0.71	0.73	0.78	0.79						
80	0.04	0.03	0.03	0.03	0.03	0.03	0.03	0.02	0.02	0.02	0.02	0.03						
85	0.02	0.02	0.02	0.02	0.02	0.02	0.02	0.02	0.02	0.02	0.01	0.02						
90	0.00	0.00	0.00	0.00	0.00	0.00	0.00	0.00	0.00	0.00	0.00	0.00						
95	0.00	0.00	0.00	0.00	0.00	0.00	0.00	0.00	0.00	0.00	0.00	0.00						
100	0.00	0.00	0.00	0.00	0.00	0.00	0.00	0.00	0.00	0.00	0.00	0.00						
105	0.00	0.00	0.00	0.00	0.00	0.00	0.00	0.00	0.00	0.00	0.00	0.00						
110	0.00	0.00	0.00	0.00	0.00	0.00	0.00	0.00	0.00	0.00	0.00	0.00						
115	0.00	0.00	0.00	0.00	0.00	0.00	0.00	0.00	0.00	0.00	0.00	0.00						
120	0.00	0.00	0.00	0.00	0.00	0.00	0.00	0.00	0.00	0.00	0.00	0.00						
125	0.00	0.00	0.00	0.00	0.00	0.00	0.00	0.00	0.00	0.00	0.00	0.00						
130	0.00	0.00	0.00	0.00	0.00	0.00	0.00	0.00	0.00	0.00	0.00	0.00						
135	0.00	0.00	0.00	0.00	0.00	0.00	0.00	0.00	0.00	0.00	0.00	0.00						
140	0.00	0.00	0.00	0.00	0.00	0.00	0.00	0.00	0.00	0.00	0.00	0.00						
145	0.00	0.00	0.00	0.00	0.00	0.00	0.00	0.00	0.00	0.00	0.00	0.00						
150	0.00	0.00	0.00	0.00	0.00	0.00	0.00	0.00	0.00	0.00	0.00	0.00						
155	0.00	0.00	0.00	0.00	0.00	0.00	0.00	0.00	0.00	0.00	0.00	0.00						
160	0.00	0.00	0.00	0.00	0.00	0.00	0.00	0.00	0.00	0.00	0.00	0.00						
165	0.00	0.00	0.00	0.00	0.00	0.00	0.00	0.00	0.00	0.00	0.00	0.00						
170	0.00	0.00	0.00	0.00	0.00	0.00	0.00	0.00	0.00	0.00	0.00	0.00						
175	0.00	0.00	0.00	0.00	0.00	0.00	0.00	0.00	0.00	0.00	0.00	0.00						
180	0.00	0.00	0.00	0.00	0.00	0.00	0.00	0.00	0.00	0.00	0.00	0.00						

C Range: 0 - 360DEG
C Interval: 30.0DEG
Test Speed: HIGH
Temperature:25.3℃
Operators:zoe
Test Date:2024-3-28

γ Range: 0 - 180DEG
γ Interval: 1.0DEG
Test System:EVERFINE GO-SPEX500_V1 SYSTEM V2.00.461
Humidity:65.0%
Test Distance:3.160m [K=1.0000]
Remarks: LAMP:BXRE-30G2000-C-83 Ra:90
LENS:PM-0139 12R
DRIVER:TDI044NA0900EF 900mA
30minutes warm-up